



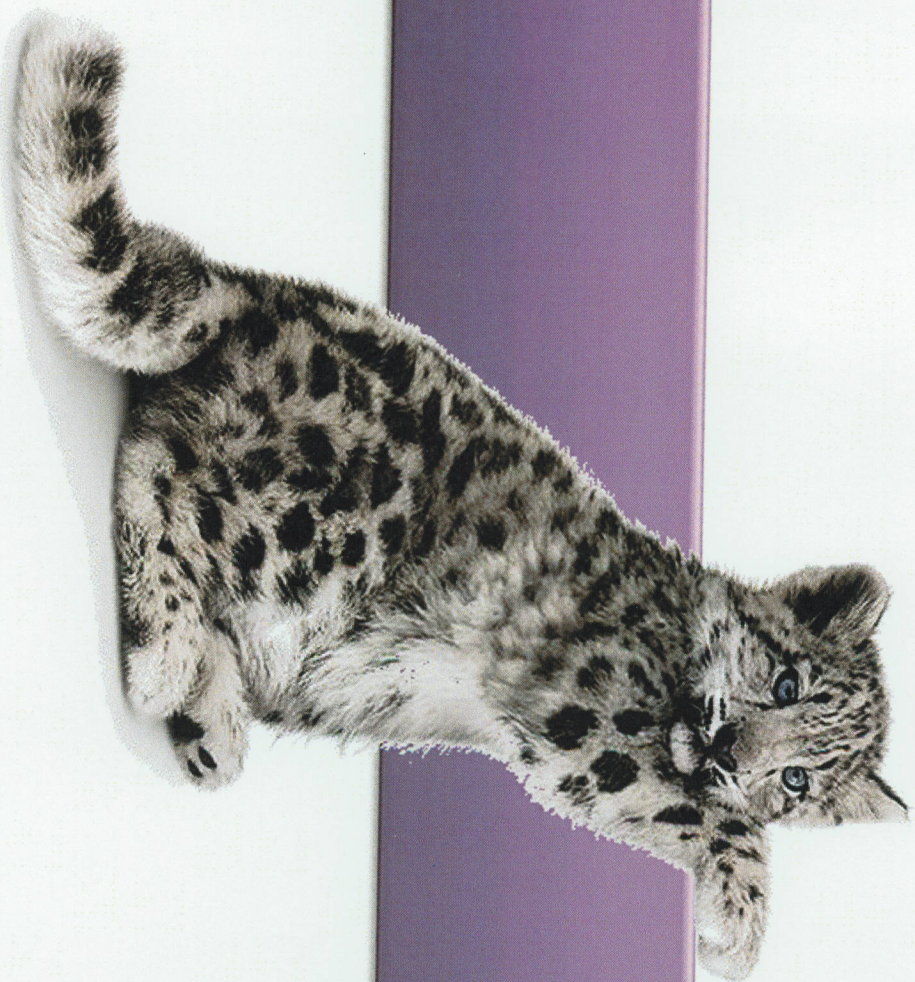
# Athabasca County | TELUS Community Update

---

November 2016







# Cell Coverage



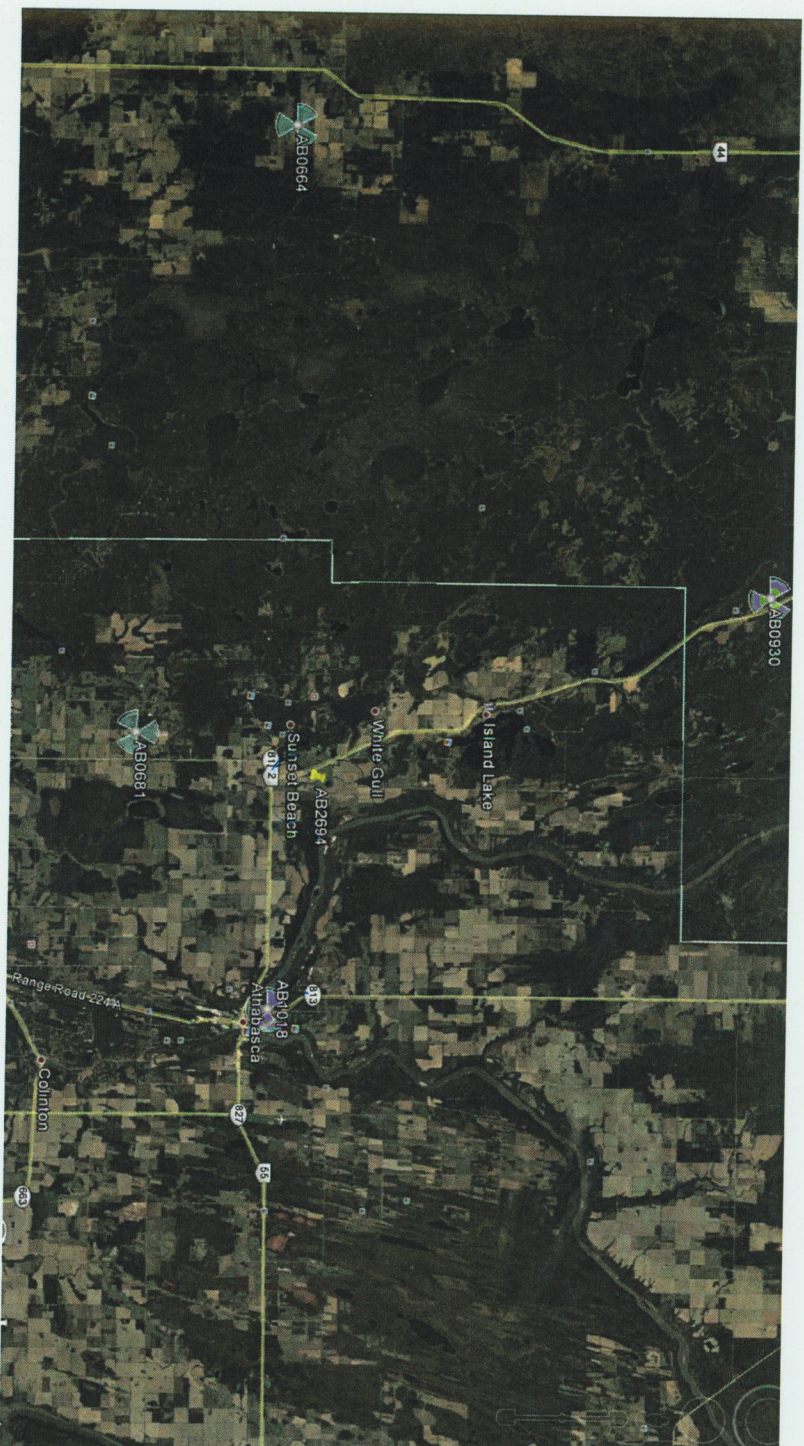
## TELUS Wireless Approach

---

- TELUS purchased spectrum in 2014 in the 700Mhz frequency (4G)
- 700Mhz reaches much farther and penetrates buildings better than HSPA network
- Current strategy is to implement this frequency on all existing tower sites then evaluate the network for performance management
  - 700 Mhz spectrum to be fully operational in Athabasca, Boyle, Grassland, Wandering River and across Athabasca county for Q1 2017
- Based on conversations with Reeve Splane and Council, new tower site added to 2017 build plan at Hwy 2 & Hwy 812 junction near Sunset Beach, White Gull, and Island Lake
- Additional spectrum expected to come available in 2018 to enable mass market High Speed internet over Mobility



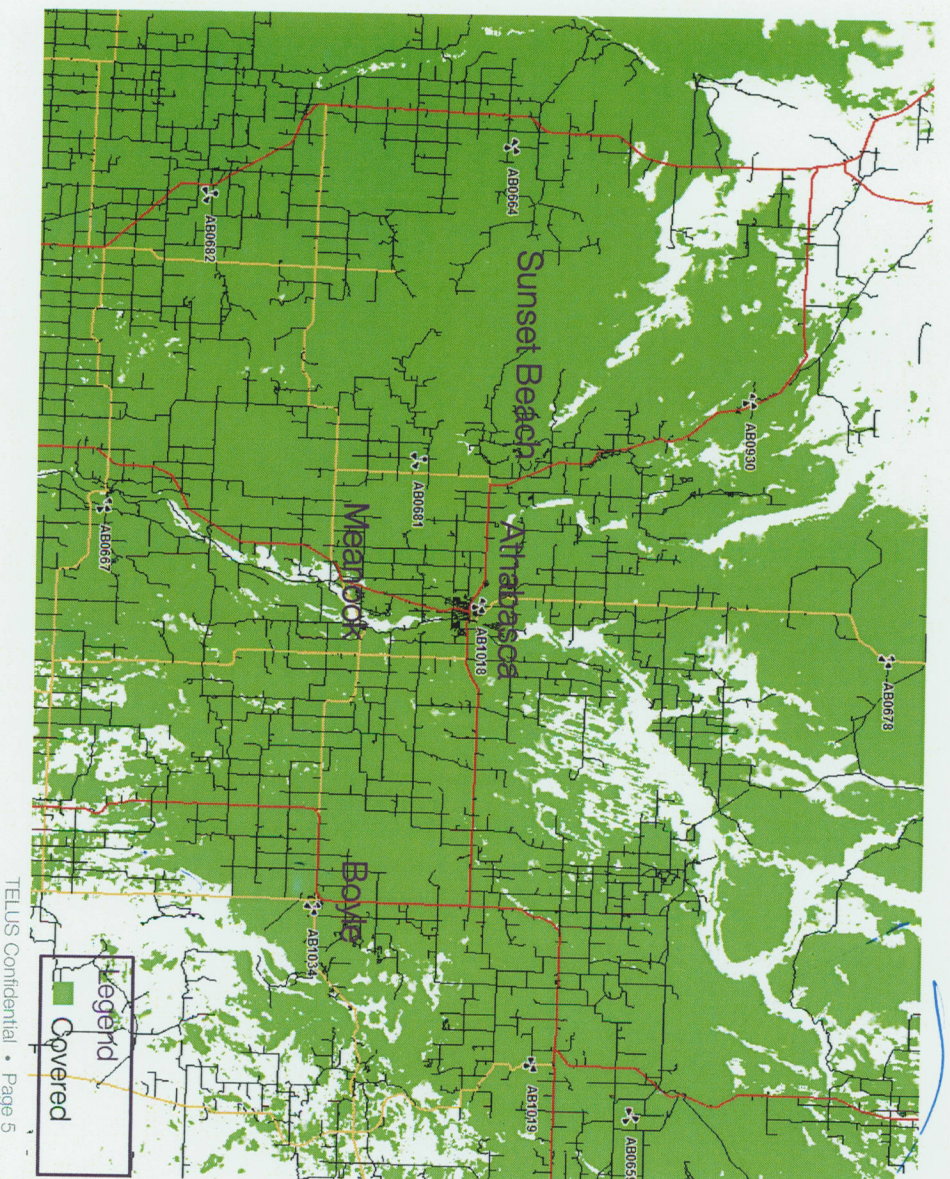
# New Tower Site Location Summary



- New Tower Site added to 2017 build based on County demand, application submitted to county
- \$1.1 M investment, will improve service for summer villages and Hwy 2 corridor to Slave Lake
- 106 M tower will come online in summer 2017 with full 700 Mhz capability



# Current Athabasca County Coverage Overview

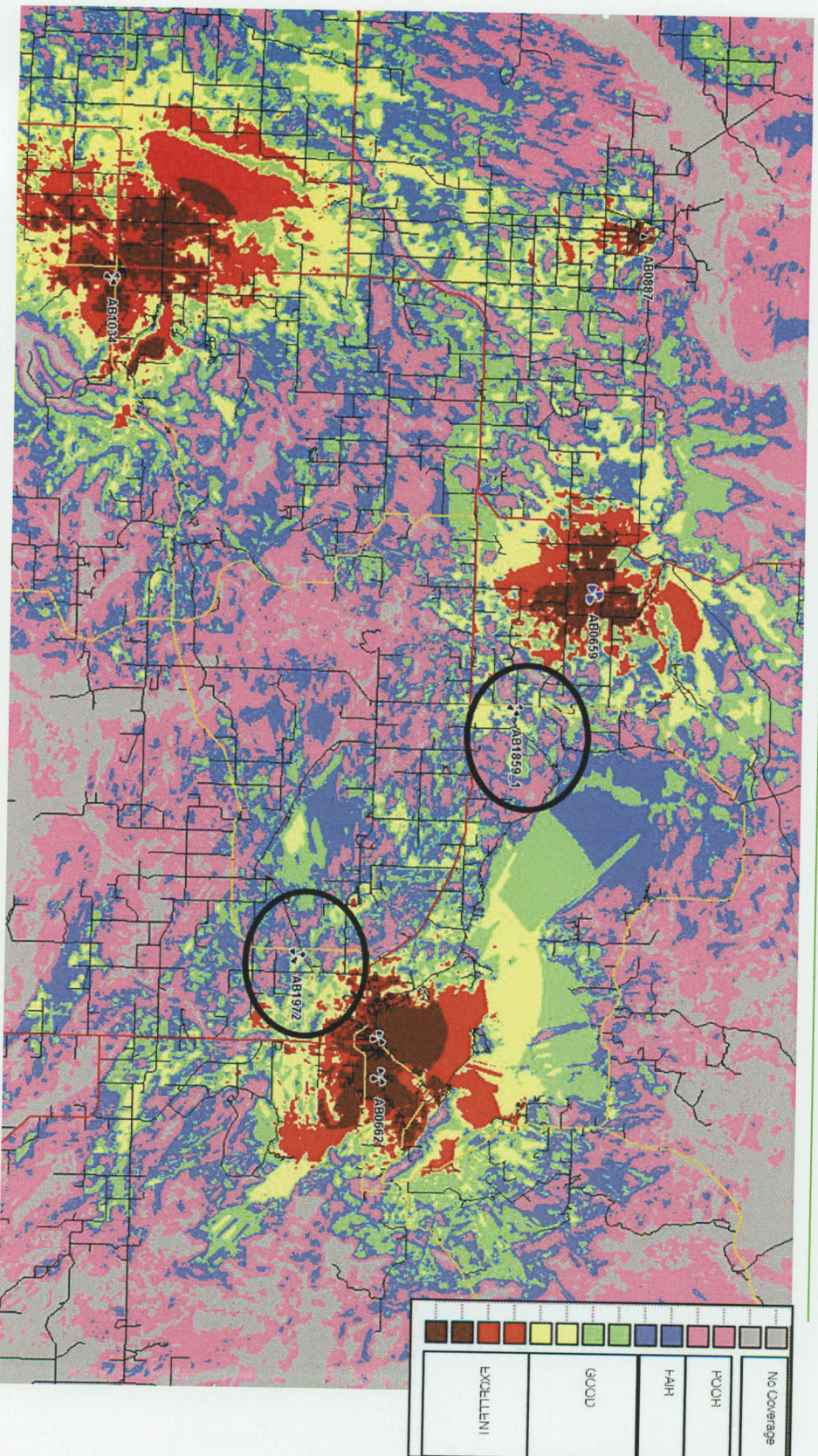


TELUS Confidential • Page 5

- County currently serviced by 10 cell towers
- Does not take into consideration 700 Mhz deployment or summer village tower (Q2 '17)
- Region will see significant improvements in Q1 time frame as a result of 700 Mhz spectrum deployment
  - Current build is construction complete
  - Calibration process expected to be completed by Q1 2017

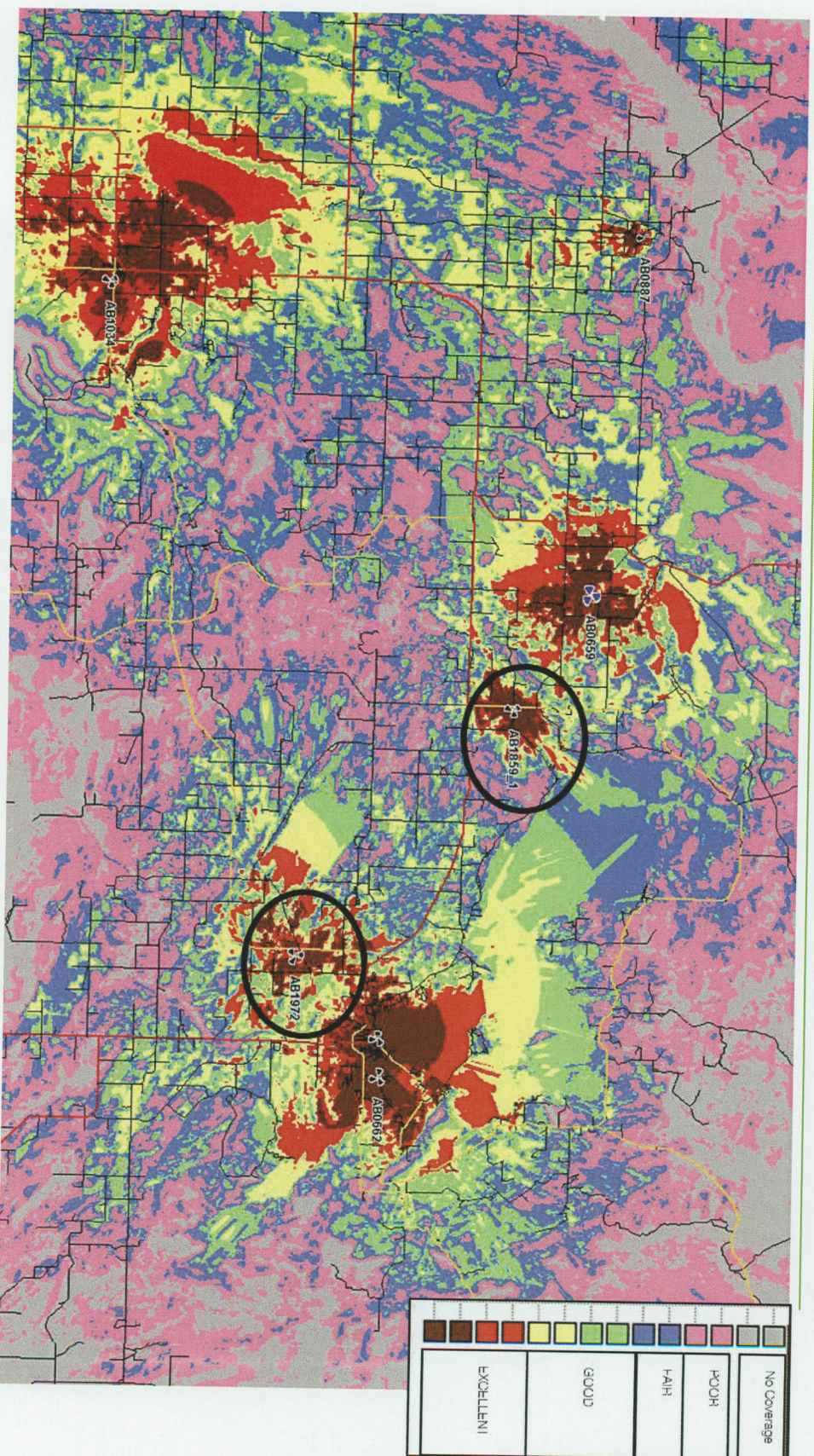


# Example: Before 700 Mhz Deployment





# Example: After 700 Mhz Deployment







# Wireline Services



## TELUS Wireline Approach

---

- Currently undergoing a generational investment in Wireline infrastructure through the deployment of fibre optic across western Canada
  - 70 + communities deployed since 2013 at \$0 cost to residents
  - All cell sites fibre fed to enable wireless/wireline customer service improvements in the future
- Recent launch of Smarthub product to enable high speed internet over wireless for more rural areas at consumer price points
  - 250 GB, \$75 per month ✓
  - 500 GB, \$115 per month ✓
- Proactive sustainment and repair of infrastructure across the region to improve reliability ✓
- Closely working with government to drive more significant fines for mass cable cuts and theft ✓



# Q&A





Thank you

